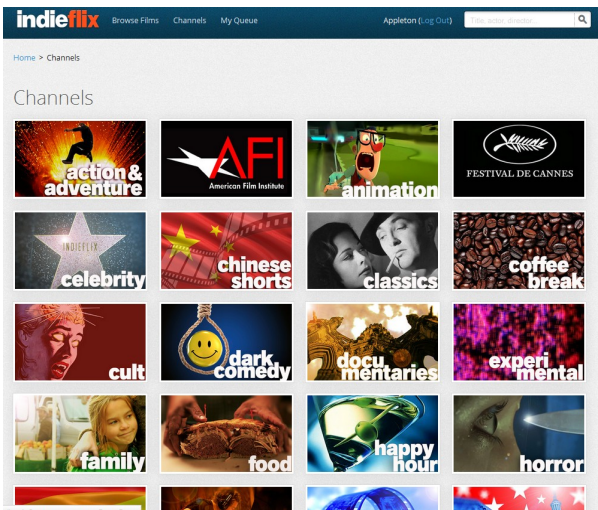


## Find films by channel

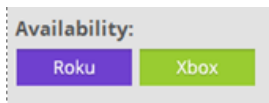
Channels allow you to find films by genre or film festival.



Click on the genre and you will see a variety of films that fit your taste.

## Other ways to view

If you wish to use Roku or Xbox to view films, instructions are at the bottom of the page. You will add an app and enter a 6 digit code provided by IndieFlix. Once you have entered the code, the device will be linked to your account.



You can see whether a film is available for this service by checking the availability in the menu.

If your Android device does not support Flash Player, check your app store for another app that will do so.

- **Films include shorts and full-length**
- **Directly support independent filmmakers when you watch**
- **View on Internet-enabled computers, tablets and smartphones**
- **Use Roku or Xbox to view on your TV**

# indieflix

Thousands of independent films  
from 50 countries around the world

- **Free using your InfoSoup library card**
- **Unlimited access—no holds or waiting**
- **Includes the best of Sundance, Cannes, Tribeca, and SXSW film festivals**
- **Online streaming means no waiting for downloads**



www.apl.org  
920-832-6173

## Create a Gateway account

To access IndieFlix films, you need a computer, tablet or smart phone and a broadband internet or WiFi connection—the faster the better.

Films are accessed through your browser as streaming video. Mobile devices access the films through their data plan, so be aware that your provider may charge for this time.

Library access to IndieFlix is through Recorded Books Gateway. The Gateway also provides access to Zinio, where you can download digital issues of 100 popular magazines.



Go to [www.apl.org](http://www.apl.org), and click on the IndieFlix logo below the InfoSoup library card.

If you have a Zinio account, you can use your sign-in from the landing page to access both Zinio and IndieFlix. If you don't already have a Gateway or Zinio account through the Appleton Public Library, click "Create Account" on the left.

Type in the barcode from your library card (without any spaces) then create your new account. Your password must have at least 7 characters using both letters and numbers.

## Create an IndieFlix account

If you already have an account, choose **Log in** from the **Already Registered** area, and use your Zinio APL Landing information to log in to the Gateway.

INDIEFLIX

Click on **IndieFlix**, then create your account.

Now you can log in at [indieflix.com](http://indieflix.com) from anywhere in the U.S., and watch thousands of films.

## Find films

Navigation is simple.

**MyFlix** is your list of saved films.

**Discover** highlights films in categories like **Staff Picks**, **Trending**, and **Recently Added**.

**All Films** lets you filter a search by choices like time, genre and audience.

**Channels** groups films by type. Some examples are animation, film festival, music, thriller, web series and classics.

**Search** for films by title, actor, director, country, and other factors.

New feature!

The site will automatically adjust to the size of the device you are using, making it easier to watch and to navigate the site.

Change your account settings. Set up your Roku or Xbox. Log out.

